



House (EPC Rating: C)

**APARTMENT 60, 16 ST. GEORGES CLOSE,
SHEFFIELD, S3 7AN**

Per month

£750 Per



1 Bedroom House located in Sheffield

Stylish 1-bedroom city apartment with shared garden & parking options

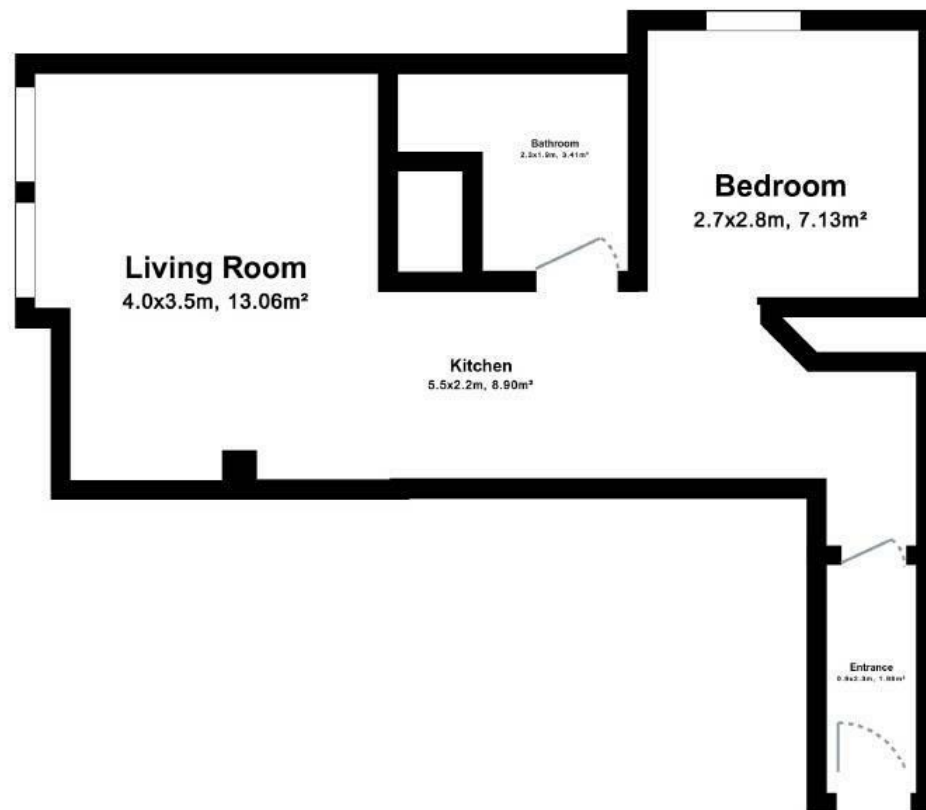
Make the most of Sheffield living in this bright, well-presented one-bedroom apartment on the 4th floor (with lift), set in the vibrant city centre—within walking distance of The University of Sheffield, the Hallamshire and all major hospitals.

The open-plan living/kitchen is ideal for relaxing or entertaining, with a modern fit-out including electric hob and oven, larger under-counter fridge, and washer-dryer (a fridge-freezer can be added on request).

The double bedroom features a sliding-door wardrobe with ample storage, while the stylish bathroom offers a shower cubicle, basin and WC.

Outside, residents enjoy a shared front garden, perfect for a morning coffee or quiet read. There is also an underground car park, with spaces available to hire from the building's leaseholders. The building provides





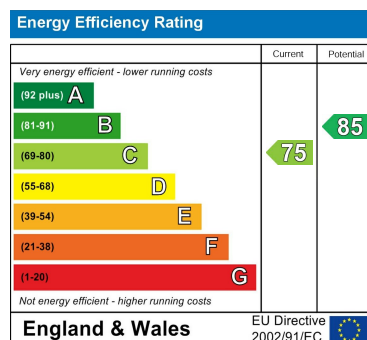
For illustration purposes only. Not to scale.

Apartment 60

Council Tax Band

A

Energy Performance Graph



Call us on

0114 2129777

hello@rent2you.org

rent2you.org

Agents Note: Whilst every care has been taken to prepare these particulars, they are for guidance purposes only. All measurements are approximate and are for general guidance purposes only and whilst every care has been taken to ensure their accuracy, they should not be relied upon and potential buyers are advised to recheck the measurements.